



## HTUV SERIES UV SYSTEM

### Material of construction

Stainless Steel 304 or 316L

### Inlet / Outlet

DN or others

### Type of UV Light

185 nm wave length

LIGHT SOURCES UV light (made in USA)

### UV Light Life

RUdT-1 TO RUdT-11 : 9000 hours

RUdT-12 : 13000 hours

### Pressure

Maximum 0.8 Mpa

### Bacteria Killing Rate

99.9%

### Power

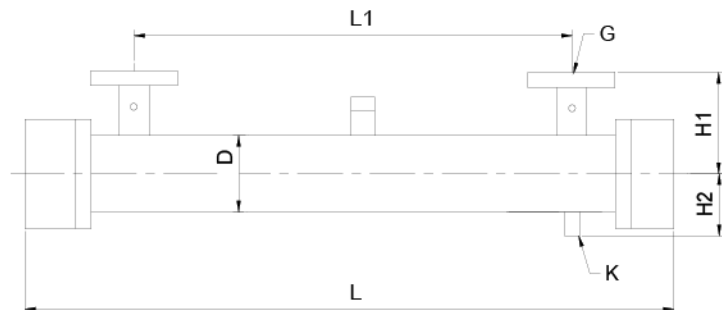
Single Phase 220V/50Hz

### Come With

Light Function Indication

Light & Sound Alarm System

Hours Counter



### DIMENSION

Model	L	L1	H1	H2	D	G	K
HTUV-1	980	710	180	105	159	DN32	1"
HTUV-2	980	700	180	105	159	DN40	1"
HTUV-3	980	670	184	135	168	DN65	1"
HTUV-4	980	670	210	135	219	DN65	1"
HTUV-5	980	655	210	135	219	DN80	1"
HTUV-6	980	655	210	135	219	DN80	1"
HTUV-7	980	635	237	162	273	DN100	1"
HTUV-8	980	635	237	162	273	DN100	1"
HTUV-9	980	610	237	162	273	DN100	1"
HTUV-10	980	580	263	188	325	DN125	1"
HTUV-11	980	1360	263	188	325	DN150	1"
HTUV-12	1800	1330	237	162	273	DN150	1"

Model	Flow Rate (GPM)	Flow Rate (m3/h)	Power (W)	No. of UV Light	Inlet & Outlet	Quartz Sleeve (mm)	Quartz Type
HTUV-1	27	6	400	5	DN32	900	Double End
HTUV-2	40	9	475	6	DN40	900	Double End
HTUV-3	66	15	625	8	DN65	900	Double End
HTUV-4	88	20	800	10	DN65	900	Double End
HTUV-5	110	25	950	12	DN80	900	Double End
HTUV-6	132	30	1250	16	DN80	900	Double End
HTUV-7	154	35	1550	20	DN100	900	Double End
HTUV-8	178	40	1775	23	DN100	900	Double End
HTUV-9	198	45	2000	26	DN100	900	Double End
HTUV-10	220	50	2250	29	DN125	900	Double End
HTUV-11	264	60	2450	32	DN150	900	Double End
HTUV-12	330	75	2780	8	DN150	1700	Double End

HTUV	-	8	-	100	-	AF	-	304
<u>Series</u>		<u>Model</u>		<u>Connections</u>		<u>Connection Type</u>		<u>Material</u>
HTUV		1 to 12		100 = DN100		N = NPT J = JIS D = DIN B = BSP		304 = SUS 304 316L = SUS 316L
						AF = ANSI Flange JF = JIS Flange DF = DIN Flange BF = BS Flange		